

# EK-ST50H User Guide

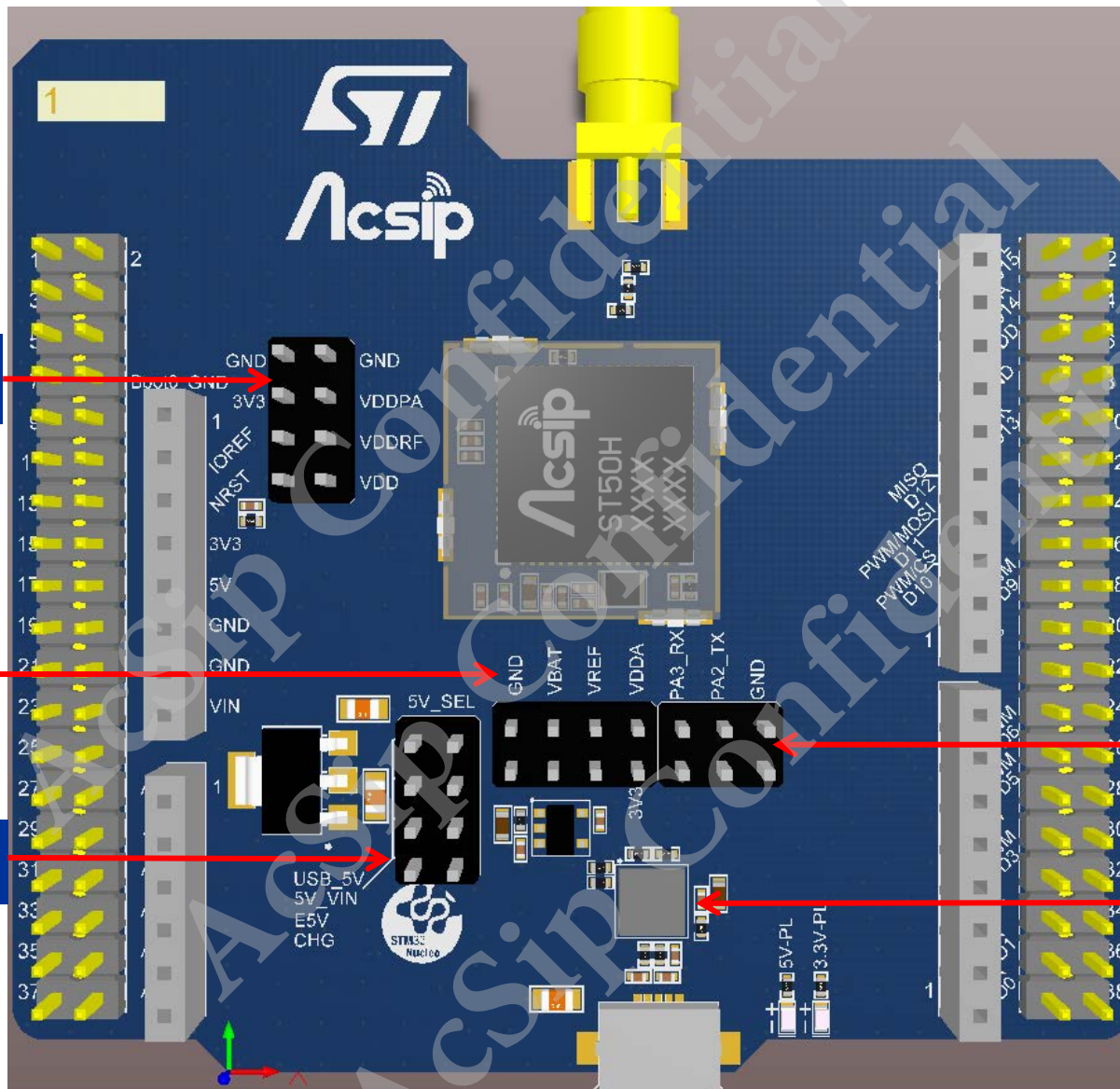


**AcSiP Technology Corp.**

[www.acsip.com.tw](http://www.acsip.com.tw)



# EK-ST50H PCB Connector Description

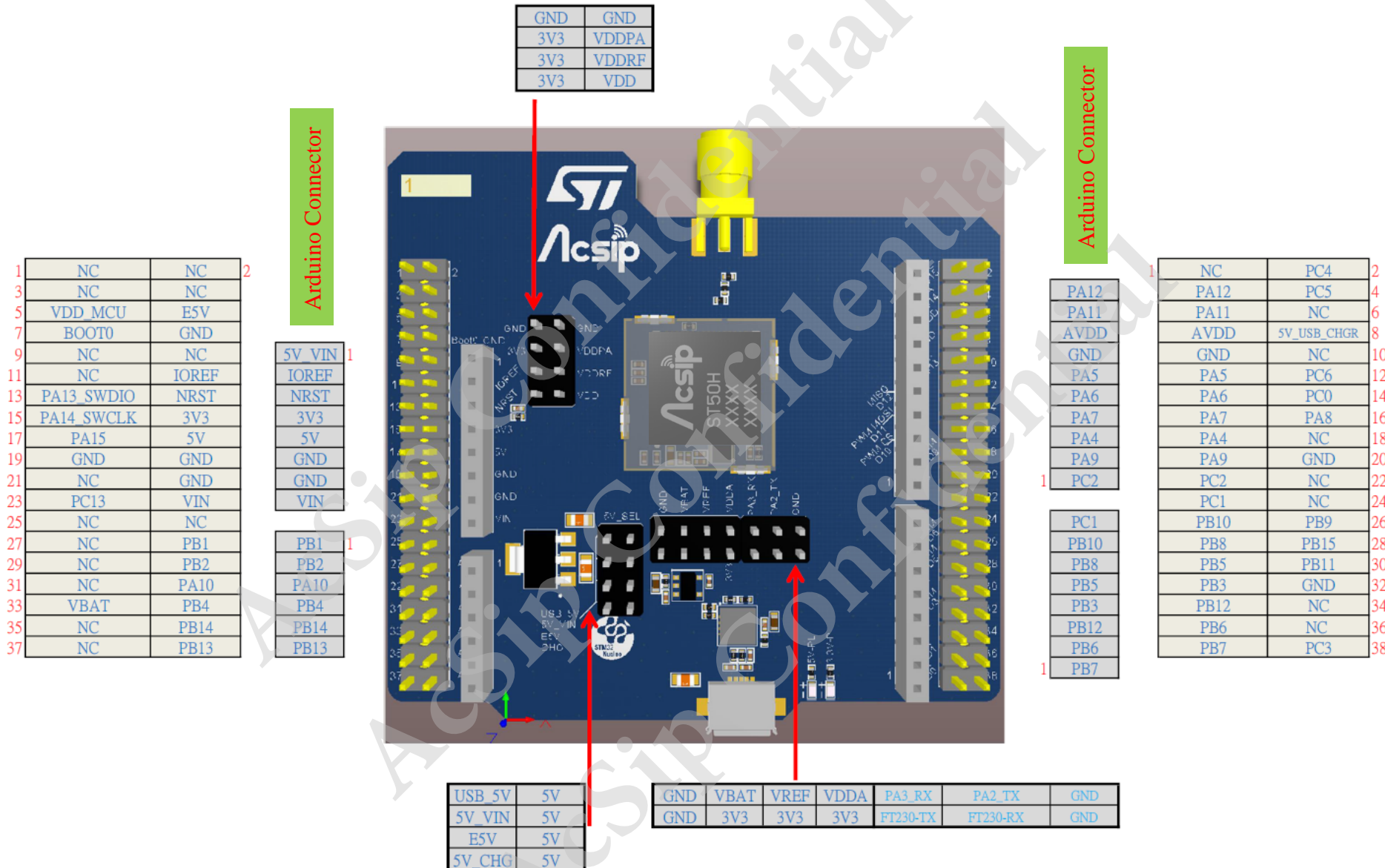


UART Port Connector

FTDI Chip FT230XQ  
USB to Basic UART

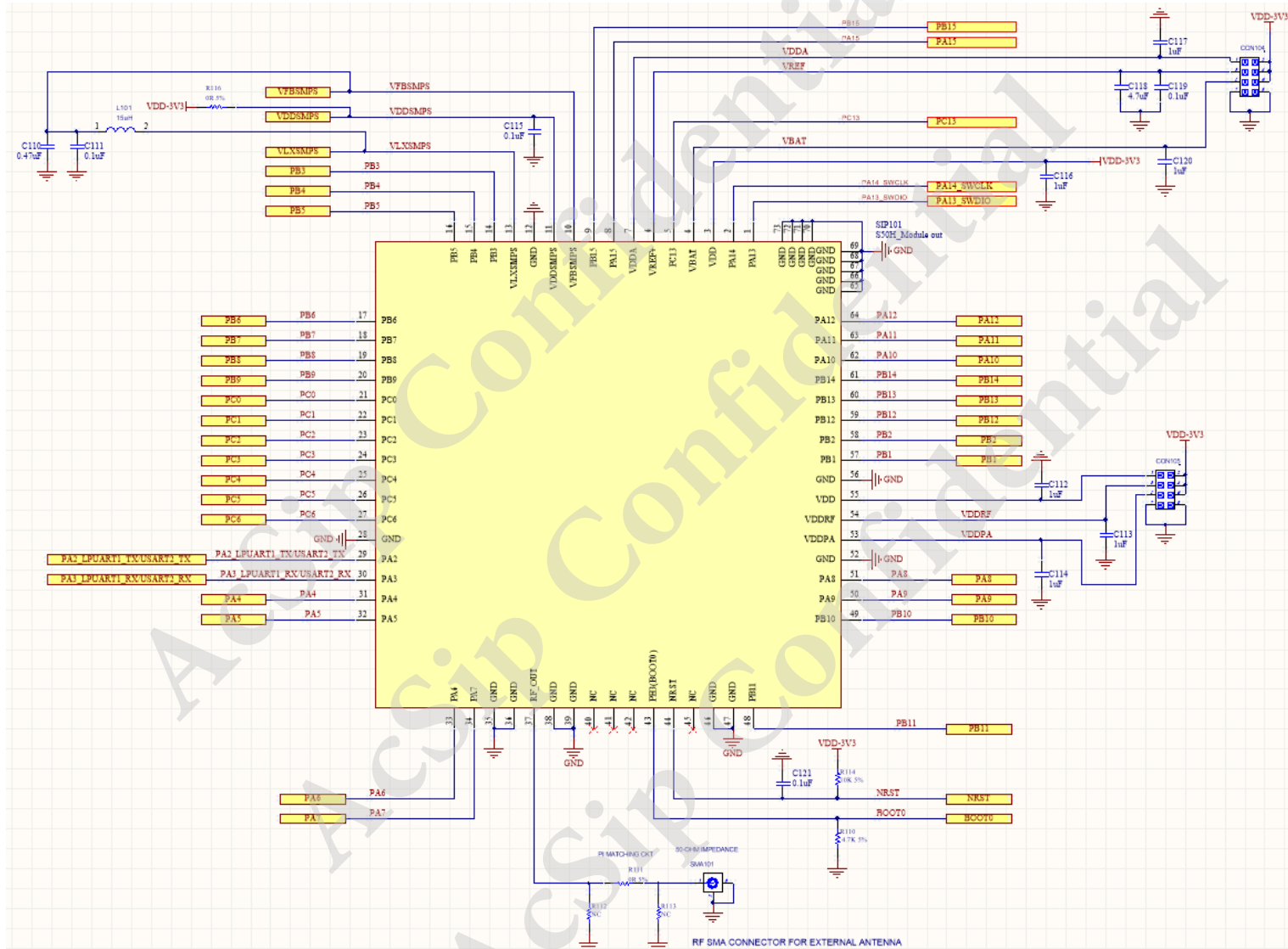
<https://www.ftdichip.com/Products/ICs/FT230X.html>

# EK-ST50H Pin Definition



# EK-ST50H Schematic Diagram

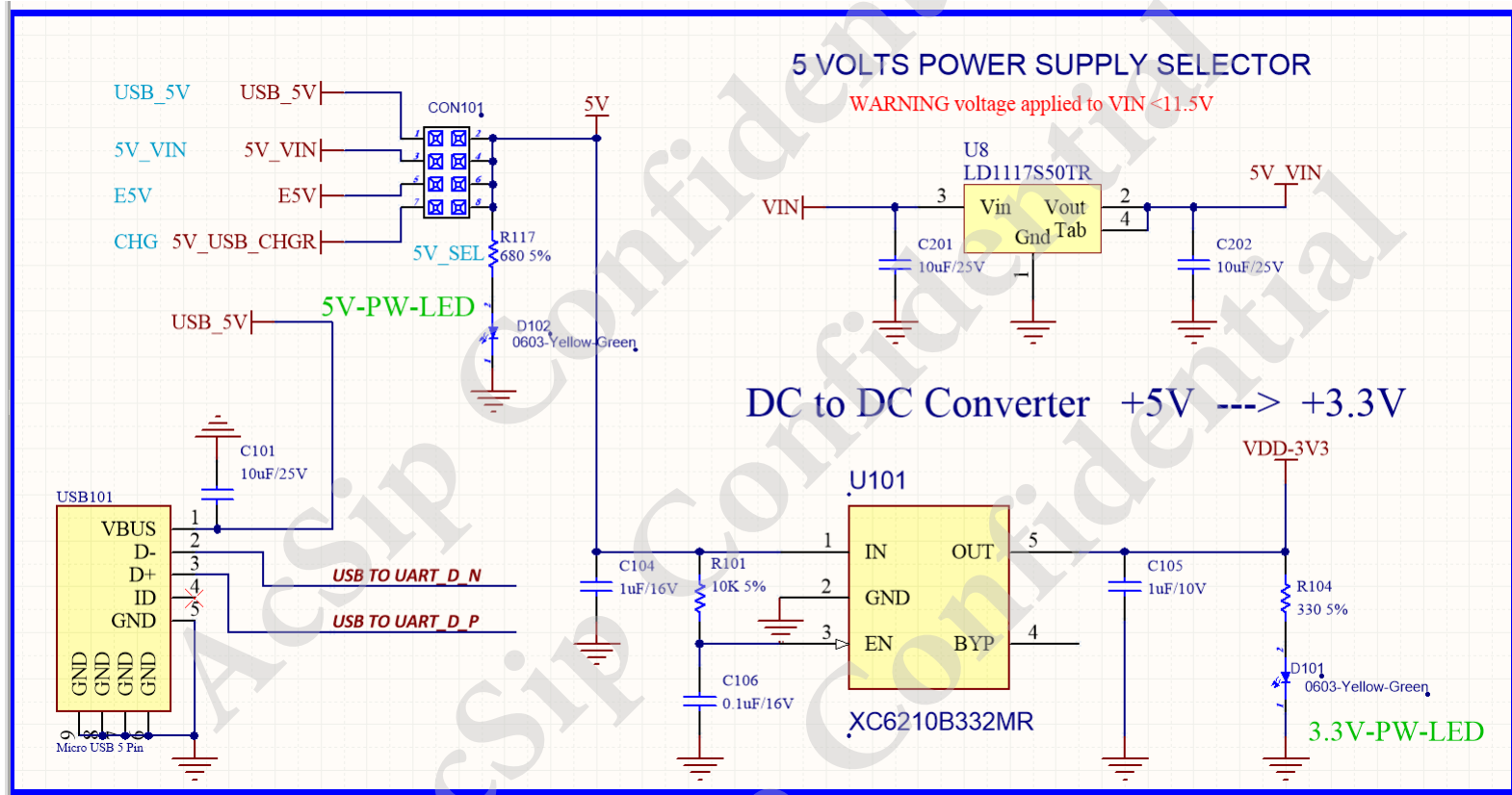
## ST50H Circuit Diagram





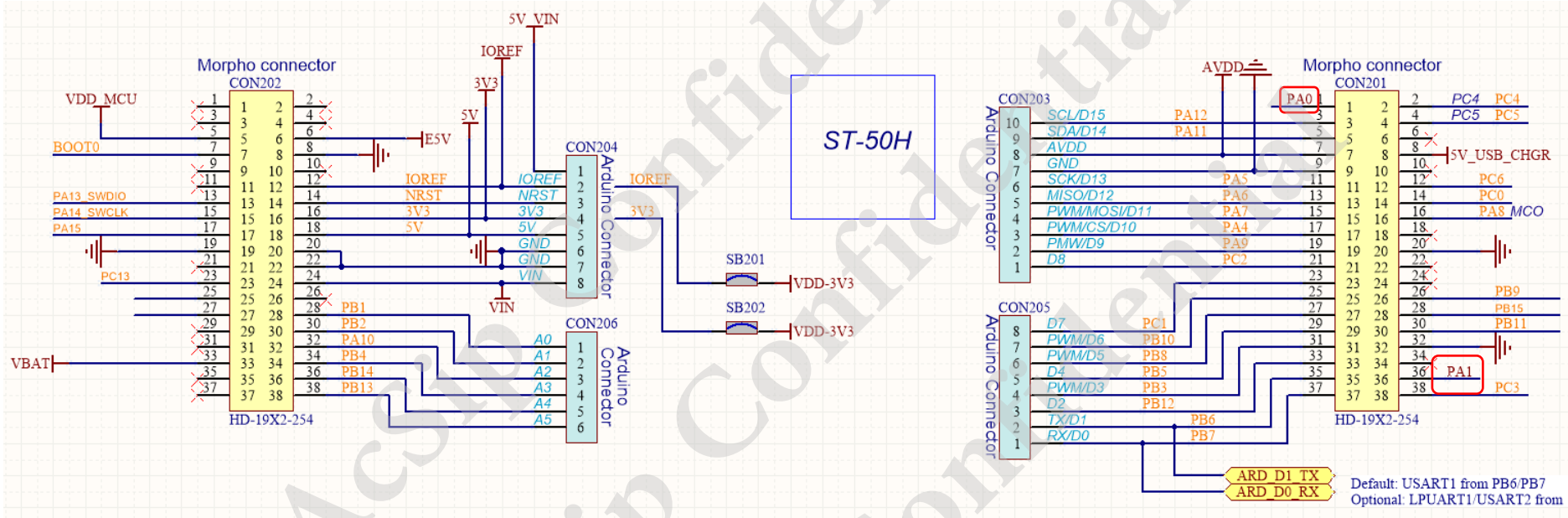
# EK-ST50H Schematic Diagram

## Power Supply Circuit Diagram



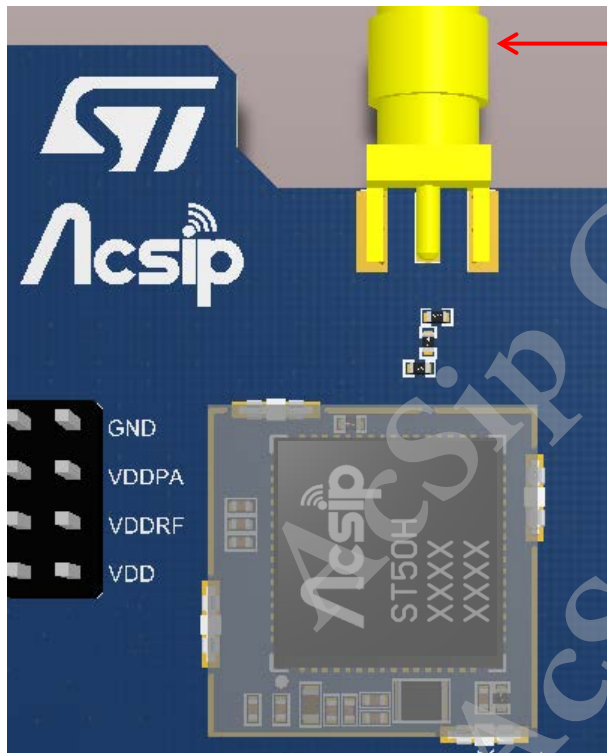
# EK-ST50H Schematic Diagram

## Pin definition Circuit Diagram

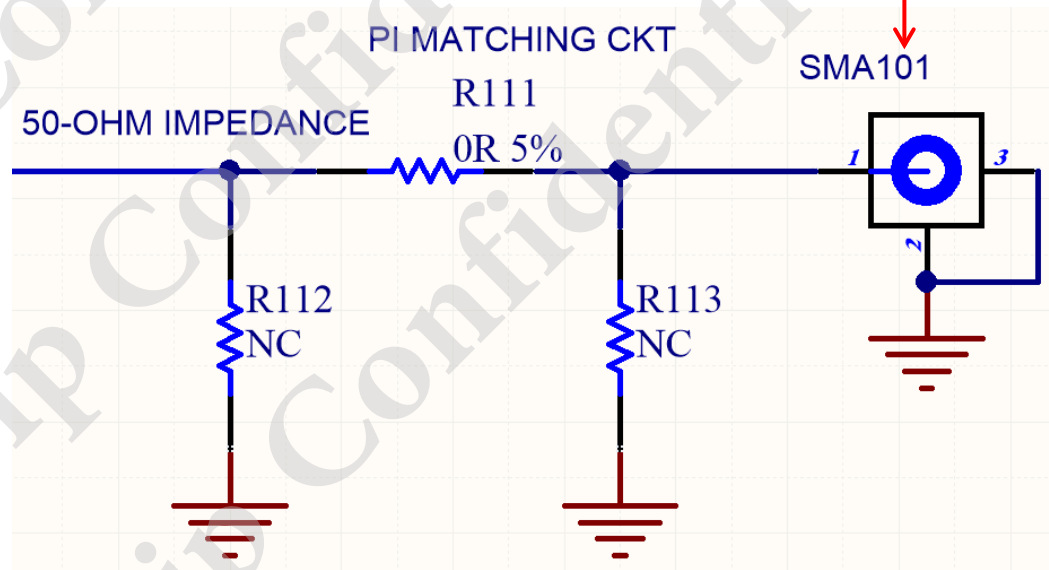


Note : The PA0 and PA1 pins in ST50H have been controlled by Acsip's software  
 ,So these two pins on the PCB are NC pins.

# RF Trace Matching



RF SMA Connector for External Antenna



Note : RF traces should match 50 ohm impedance